

30" MANHOLE FRAME
AND COVER

60" HS-20 LOAD RATED
PRECAST FLAT TOP

PREFORMED BUTYL
JOINT SEAL

60" PRECAST
MANHOLE SECTION

POLYPROPYLENE
MANHOLE STEP (TYP.)

#57 STABILIZATION STONE

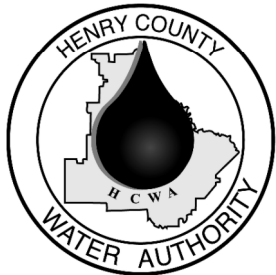
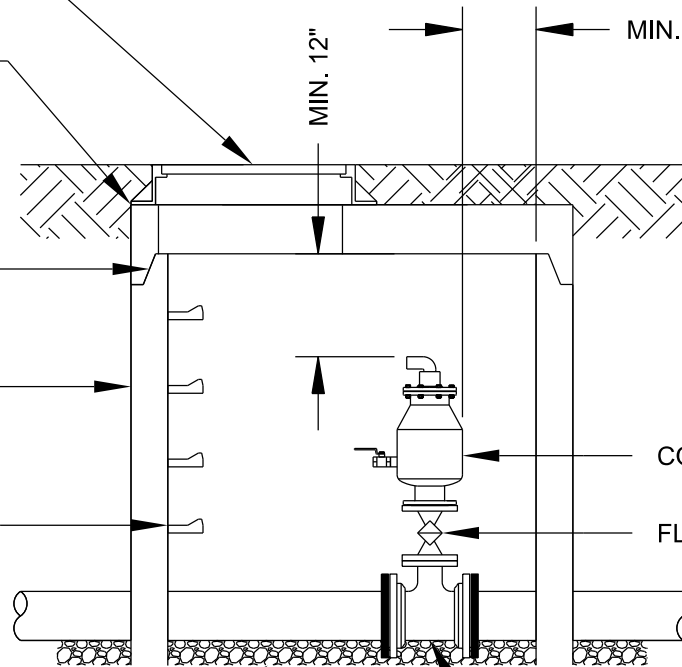
MIN. 12"

MIN. 12"

COMBINATION AIR/VACUUM VALVE

FLG PLUG VALVE

MJ x FLG TEE WITH RESTRAINED JOINT GLANDS



HENRY COUNTY WATER AUTHORITY

SANITARY SEWAGE COMBINATION AIR/VACUUM VALVE (4" AND LARGER)

REVISED: 02/16/2018

SCALE: N.T.S.

DETAIL NO.

S23